

01 Absorbicinių šilumos siurblių pastatas (Darbinis apšvietimas)

Building 1 · Storey 1 · Absorbinių šilumos siurblių patalpa

Luminaire list Φ_{total}

84792 lm

 P_{total}

745.0 W

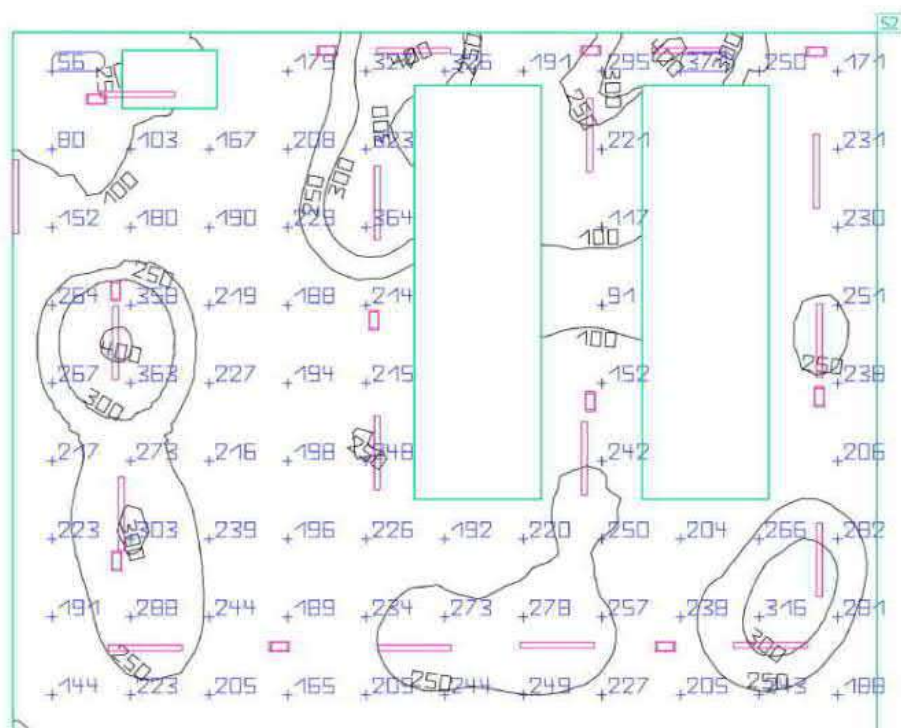
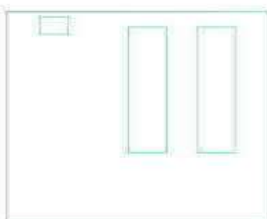
Luminous efficacy

113.8 lm/W

pcs.	Manufacturer	Article No.	Article name	P	Φ	Luminous efficacy
11	EATON	IP65PLPCG S	EATON - IP65+ LED BULKHEAD	9.0 W	743 lm	82.6 lm/W
17	EATON	VSLN5370 04Z	Versalite G2	38.0 W	4507 lm	118.6 lm/W

Building 1 · Storey 1 · Absorbinių šilumos siurblių patalpa (Light scene 2)

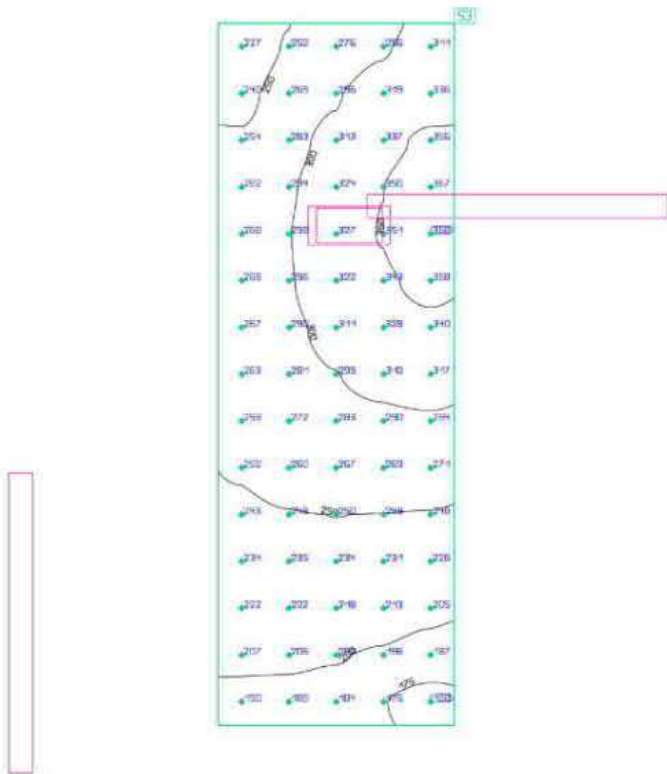
Absorbinių šilumos siurblių patalpa



Properties	\bar{E} (Target)	E_{min}	E_{max}	g_1	g_2	Index
Absorbinių šilumos siurblių patalpa Perpendicular illuminance (adaptive) Height: 0.800 m, Wall zone: 0.000 m	221 lx (≥ 200 lx) ✓	24.4 lx	410 lx	0.11	0.060	S2

Utilisation profile: General areas inside buildings - Control rooms, Plant rooms, switchgear rooms.

Building 1 · Storey 1 · Absorbcinių šilumos siurblių patalpa (Light scene 2)
Apt. aikšt. Nr. 1



Properties	\bar{E}	E_{min}	E_{max}	g_1	g_2	Index
Apt. aikšt. Nr. 1 Horizontal illuminance Height: 2.800 m	270 lx	168 lx	368 lx	0.62	0.46	S3

Utilisation profile: General areas inside buildings - Control rooms, Plant rooms, switchgear rooms

Building 1 · Storey 1 · Laiptinė

Luminaire list Φ_{total}

3473 lm

 P_{total}

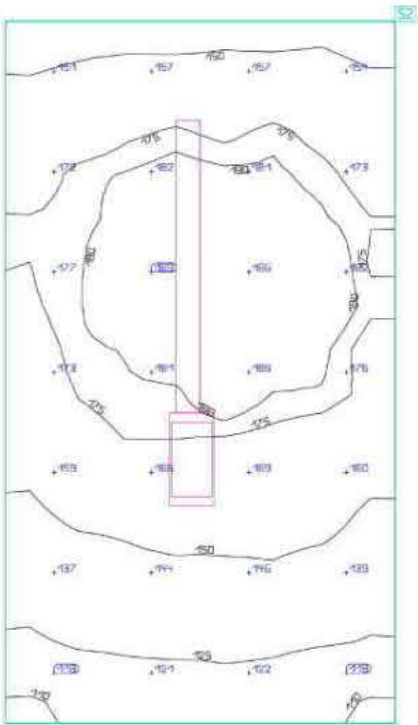
32.7 W

Luminous efficacy

106.2 lm/W

pcs.	Manufacturer	Article No.	Article name	P	Φ	Luminous efficacy
1	EATON	IP65PLPCG S	EATON - IP65+ LED BULKHEAD	9.0 W	743 lm	82.6 lm/W
1	ZUMTOBEL	42186388 (STD - Standard)	AMP S BAS 2900-840 PC WB EVG	23.7 W	2730 lm	115.2 lm/W

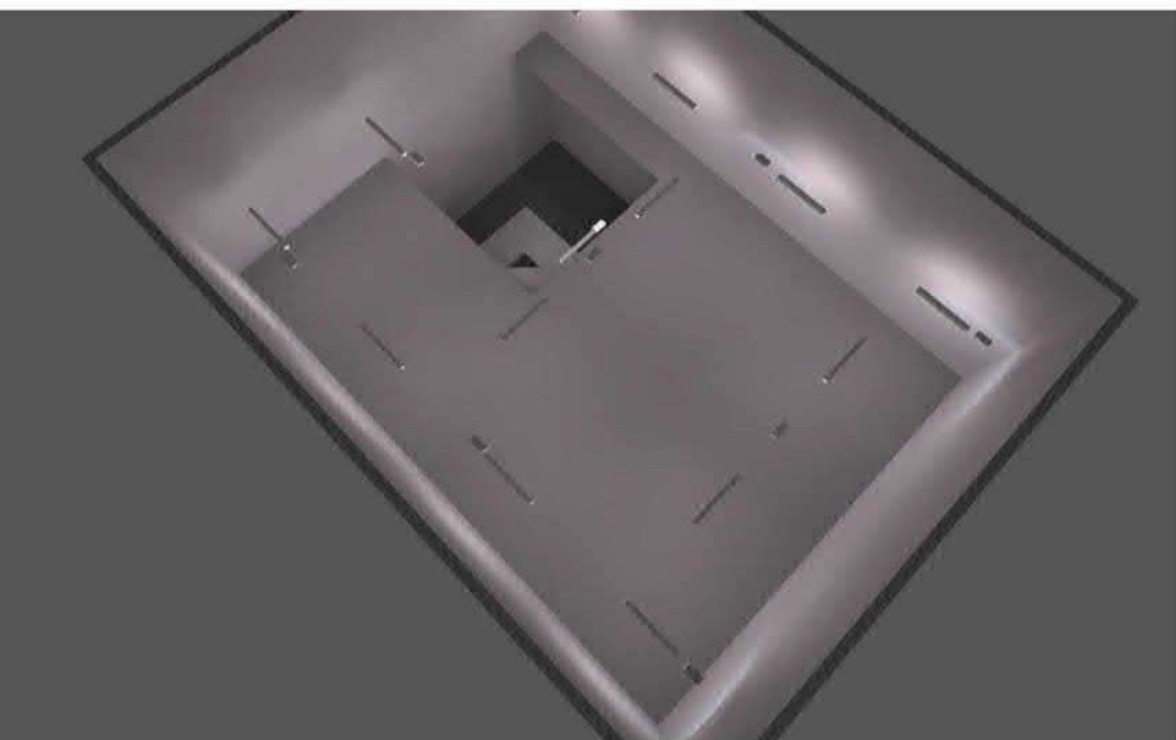
Building 1 · Storey 1 · Laiptinė (Light scene 2)
Workplane (Laiptinė)



Properties	\bar{E} (Target)	E_{min}	E_{max}	g_1	g_2	Index
Workplane (Laiptinė) Perpendicular illuminance (adaptive) Height: 0.000 m, Wall zone: 0.000 m	160 lx (≥ 100 lx) ✓	109 lx	188 lx	0.68	0.58	S2

Utilisation profile: Healthcare premises - Rooms for general use, Lifts for staff and visitors.

E PDV Balys Balčiūnas



01 Absorbinių šilumos siurblių pastatas (Darbinis apšvietimas)

Building 1 · Storey 1 · Technologinė patalpa

Luminaire list Φ_{total}

69785 lm

 P_{total}

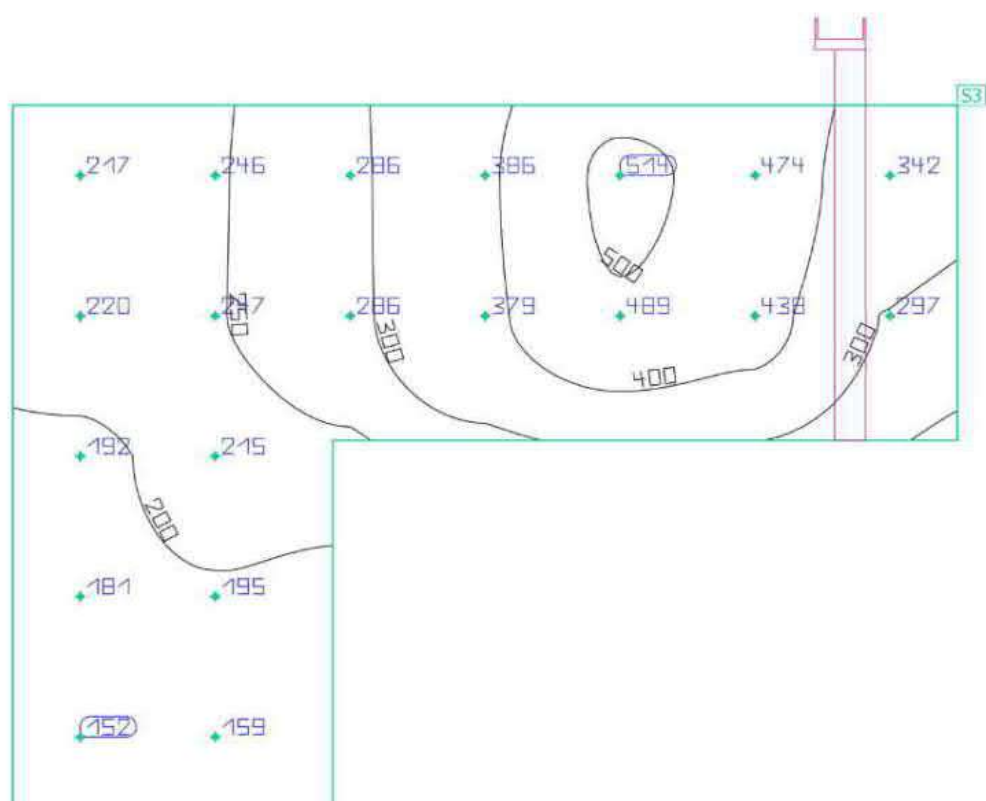
613.0 W

Luminous efficacy

113.8 lm/W

pcs.	Manufacturer	Article No.	Article name	P	Φ	Luminous efficacy
9	EATON	IP65PLPCG S	EATON - IP65+ LED BULKHEAD	9.0 W	743 lm	82.6 lm/W
14	EATON	VSLN5370 04Z	Versalite G2	38.0 W	4507 lm	118.6 lm/W

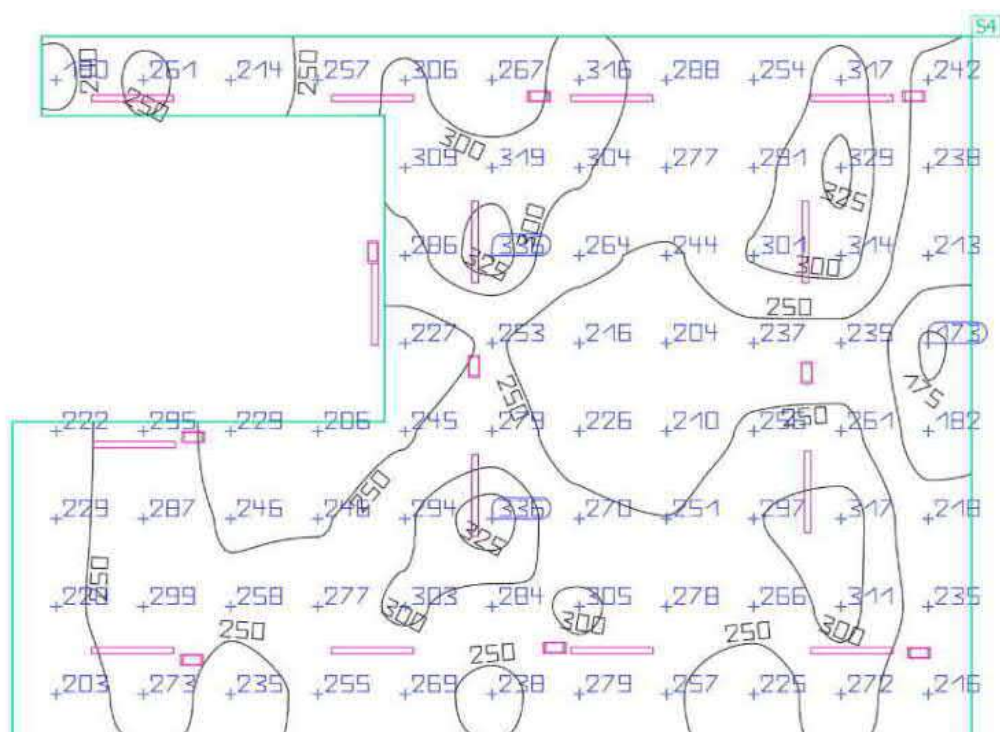
Building 1 · Storey 1 · Technologinė patalpa (Light scene 2)

Apt. aikšt. Nr. 2

Properties	\bar{E}	E_{min}	E_{max}	g_1	g_2	Index
Apt. aikšt. Nr. 2	296 lx	152 lx	514 lx	0.51	0.30	S3
Horizontal illuminance						
Height: 4.000 m						

Utilisation profile: General areas inside buildings - Control rooms, Plant rooms, switchgear rooms

Building 1 · Storey 1 · Technologinė patalpa (Light scene 2)

Technologinė patalpa

Properties	\bar{E}	E_{min}	E_{max}	g_1	g_2	Index
Technologinė patalpa	261 lx	173 lx	336 lx	0.66	0.51	S4
Horizontal illuminance						
Height: 5.800 m						

Utilisation profile: General areas inside buildings - Control rooms, Plant rooms, switchgear rooms



01 Absorbcinių šilumos siurblių pastatas (Avarinis apšvietimas)

Building 1 · Storey 1 · Absorbcinių šilumos siurblių patalpa

Luminaire list Φ_{total}

8173 lm

 P_{total}

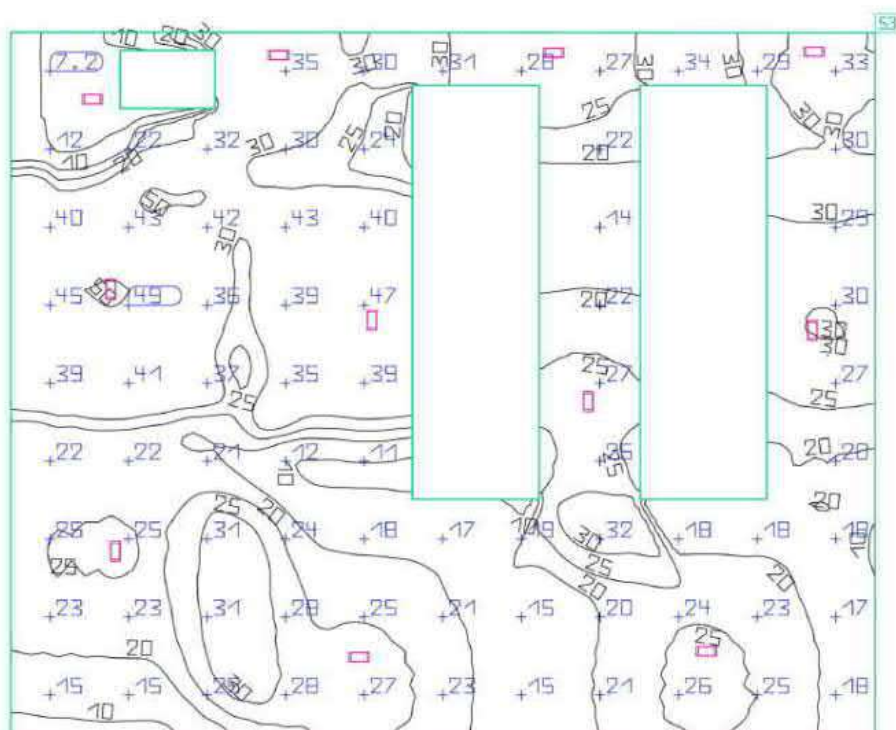
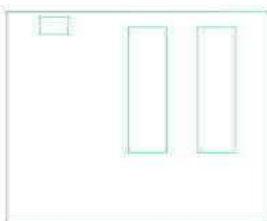
99.0 W

Luminous efficacy

82.6 lm/W

pcs.	Manufacturer	Article No.	Article name	P	Φ	Luminous efficacy
11	EATON	IP65PLPCG S	EATON - IP65+ LED BULKHEAD	9.0 W	743 lm	82.6 lm/W

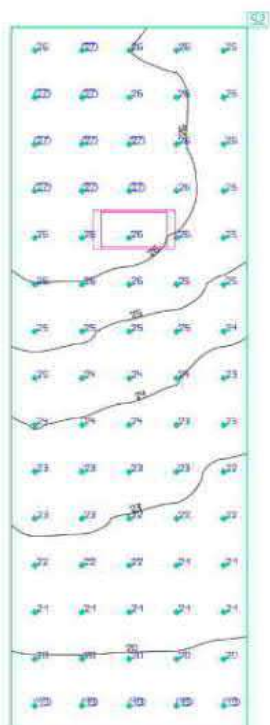
Building 1 · Storey 1 · Absorbinių šilumos siurblių patalpa (Light scene 2)

Absorbinių šilumos siurblių patalpa

Properties	\bar{E} (Target)	E_{min}	E_{max}	g_1	g_2	Index
Absorbinių šilumos siurblių patalpa Perpendicular illuminance (adaptive) Height: 0.800 m, Wall zone: 0.000 m	26.3 lx (≥ 20.0 lx) ✓	2.56 lx	51.4 lx	0.097	0.050	S3

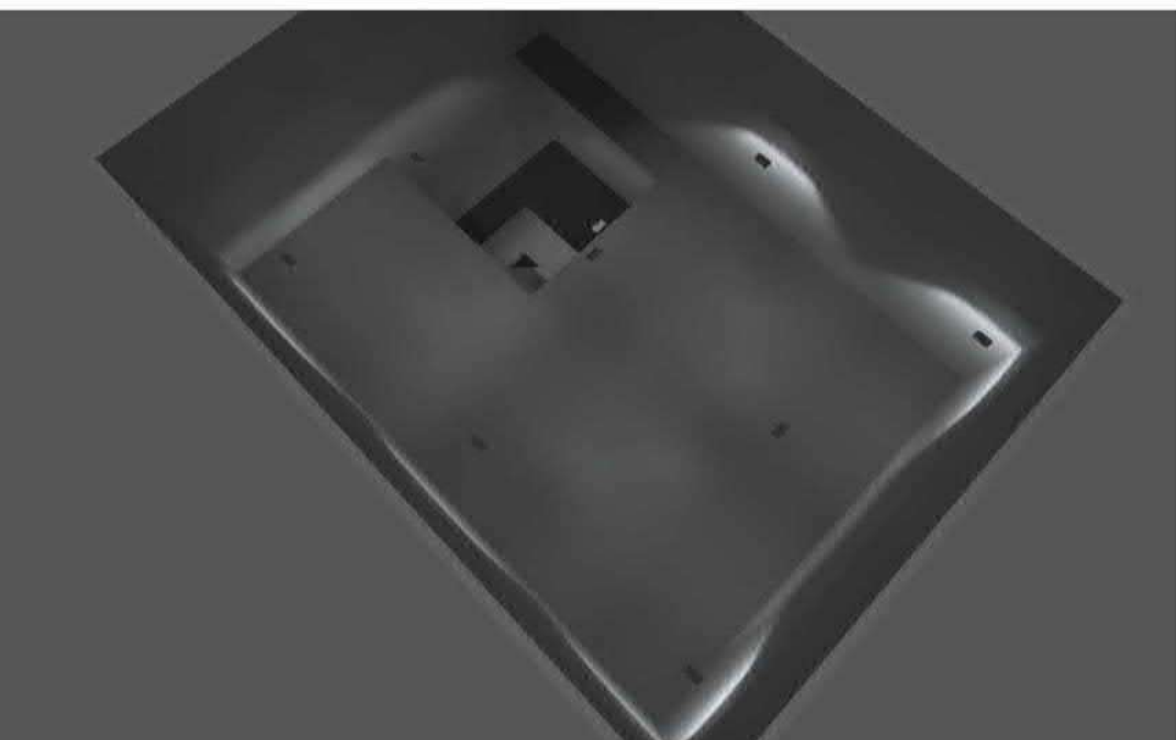
Utilisation profile: General areas inside buildings - Control rooms, Plant rooms, switchgear rooms.

Building 1 · Storey 1 · Absorbcinių šilumos siurblių patalpa (Light scene 2)

Apt. aikšt. Nr. 1

Properties	\bar{E}	E_{min}	E_{max}	g_1	g_2	Index
Apt. aikšt. Nr. 1	23.7 lx	18.9 lx	26.8 lx	0.80	0.71	S2
Horizontal illuminance						
Height: 2.010 m						

Utilisation profile: General areas inside buildings - Control rooms, Plant rooms, switchgear rooms



01 Absorbinių šilumos siurblių pastatas (Avarinis apšvietimas)

Building 1 · Storey 1 · Technologinė patalpa

Luminaire list Φ_{total}

6687 lm

 P_{total}

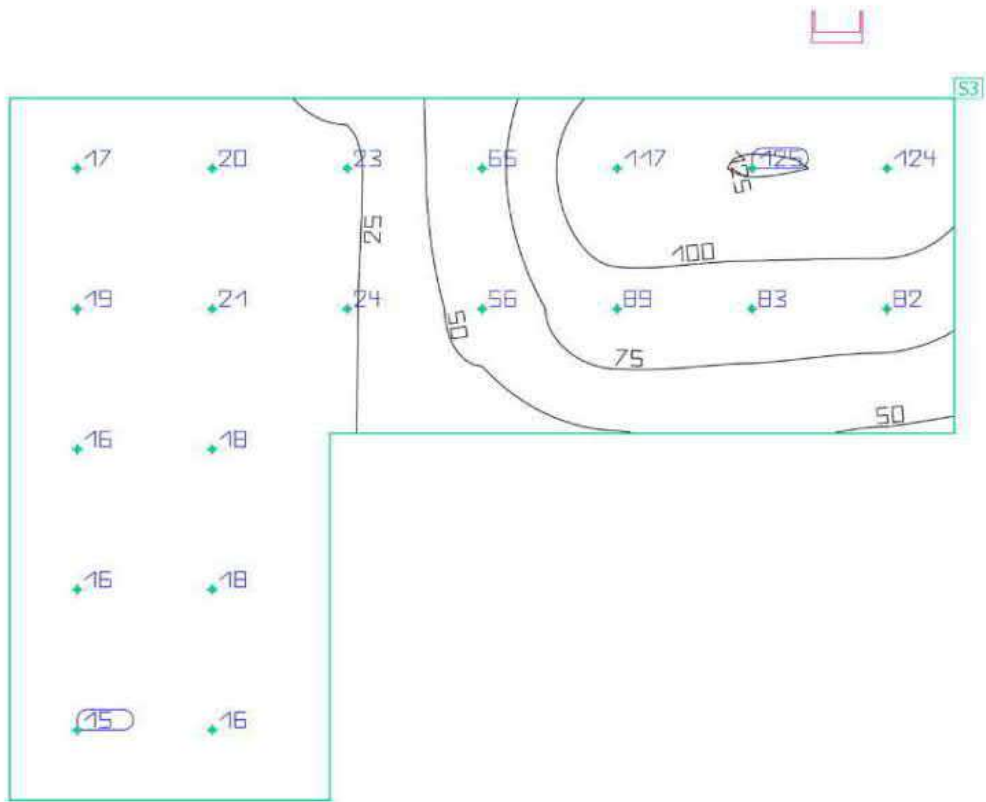
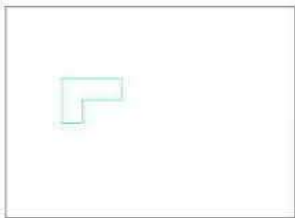
81.0 W

Luminous efficacy

82.6 lm/W

pcs.	Manufacturer	Article No.	Article name	P	Φ	Luminous efficacy
9	EATON	IP65PLPCG S	EATON - IP65+ LED BULKHEAD	9,0 W	743 lm	82.6 lm/W

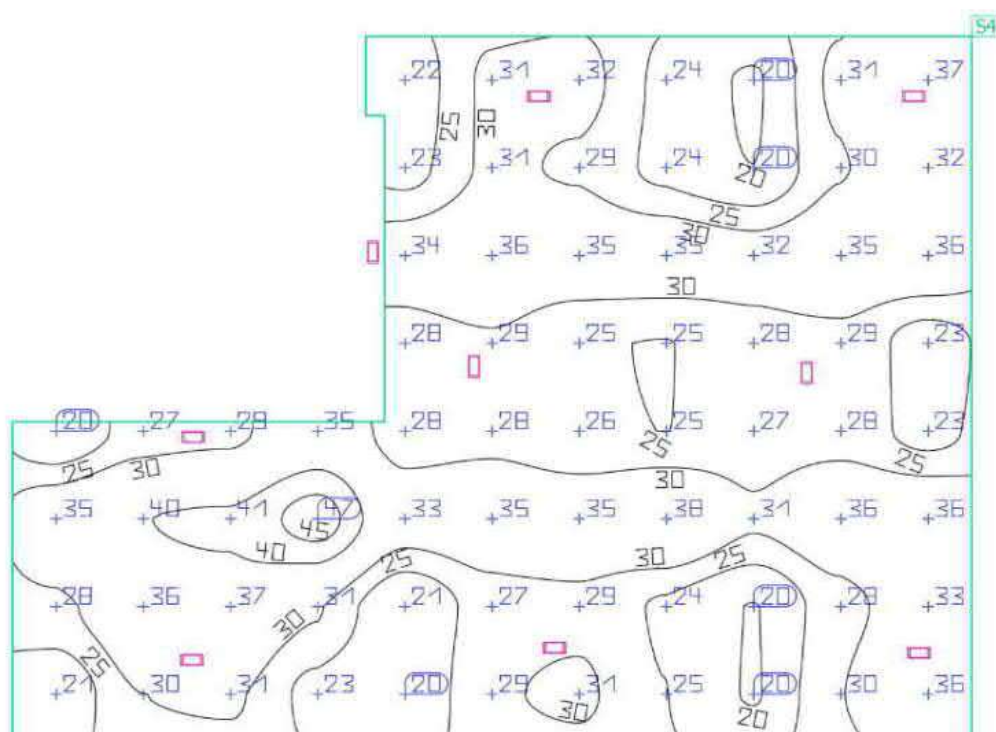
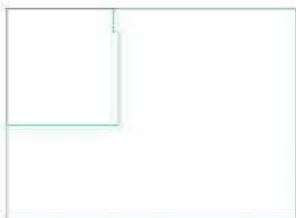
Building 1 · Storey 1 · Technologinė patalpa (Light scene 2)
Apt. aikšt. Nr. 2



Properties	\bar{E}	E_{min}	E_{max}	g_1	g_2	Index
Apt. aikšt. Nr. 2 Horizontal illuminance Height: 4.000 m	48.4 lx	15.3 lx	125 lx	0.32	0.12	S3

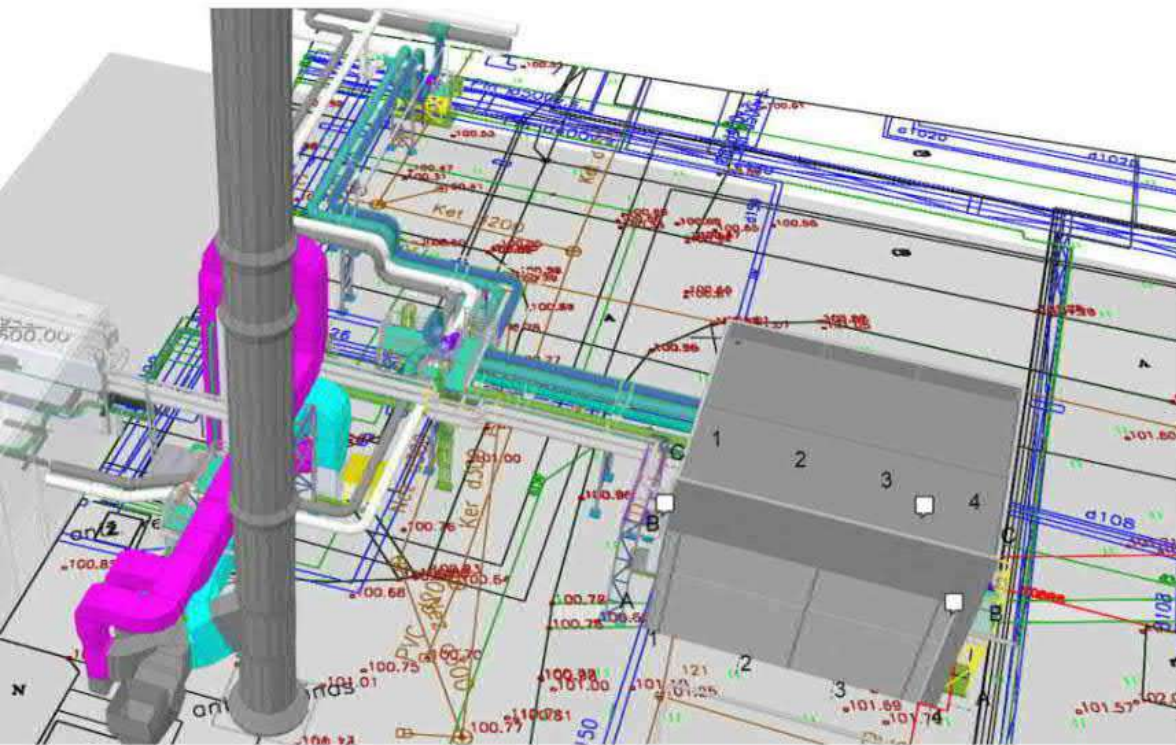
Utilisation profile: General areas inside buildings - Control rooms, Plant rooms, switchgear rooms

Building 1 · Storey 1 · Technologinė patalpa (Light scene 2)

Technologinė patalpa

Properties	\bar{E}	E_{min}	E_{max}	g_1	g_2	Index
Technologinė patalpa Horizontal illuminance Height: 5.800 m	29.6 lx	19.6 lx	47.3 lx	0.66	0.41	S4

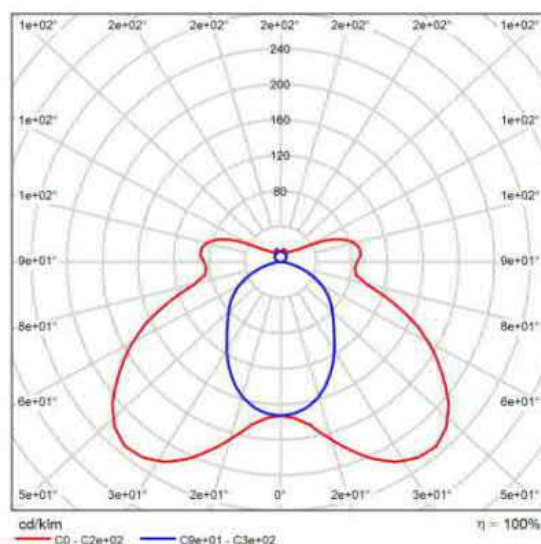
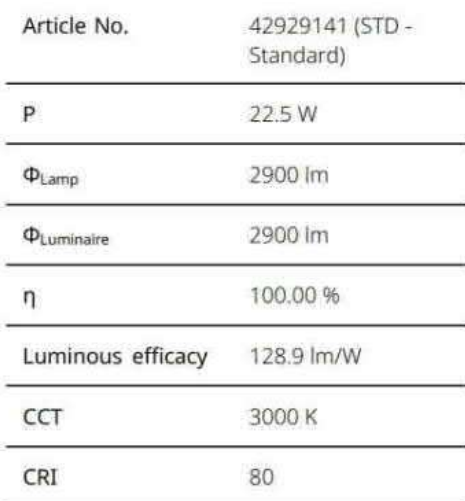
Utilisation profile: General areas inside buildings - Control rooms, Plant rooms, switchgear rooms



ŠILUMOS ENERGIJOS GAMYBOS ABSORBCINIAIS ŠILUMOS SIURBLIAIS STATINIŲ ELEKTRINĖS G. 2, VILNIAUS M. SAV. STATYBOS PROJEKTAS

Apžiūros aikštelių apšvietimas

ZUMTOBEL AMP S BAS 2900-840 CH WB EVG



Polar LDC

Glare evaluation according to UGR												
		70	70	50	50	30	70	70	50	50	30	
Ceiling		50	30	80	30	30	50	30	50	30	30	
Walls		20	20	20	20	20	20	20	20	20	20	
Floor		20	20	20	20	20	20	20	20	20	20	
Room size X Y		Viewing direction at right angles to lamp axis					Viewing direction parallel to lamp axis					
2H	2H	18.0	19.3	18.8	19.8	20.4	15.0	16.2	15.5	16.7	17.3	
	3H	19.4	20.6	20.0	21.1	21.7	15.9	17.0	16.4	17.6	18.2	
	4H	19.9	21.0	20.5	21.6	22.2	16.1	17.2	16.7	17.7	18.4	
	6H	20.4	21.4	21.0	22.0	22.8	16.2	17.2	16.8	17.7	18.4	
	8H	20.9	21.6	21.2	22.2	22.9	16.3	17.1	16.8	17.7	18.4	
4H	12H	20.9	21.8	21.5	22.4	23.1	16.1	17.1	16.7	17.7	18.3	
	2H	19.5	19.9	19.1	20.1	20.5	16.3	17.4	16.9	17.9	18.6	
	3H	20.1	21.0	20.7	21.6	22.3	17.5	18.4	18.1	19.0	19.7	
	4H	20.7	21.5	21.3	22.1	22.8	17.8	18.7	18.5	19.3	20.0	
	6H	21.3	22.0	21.9	22.6	23.4	18.0	18.7	18.6	19.3	20.1	
8H	8H	21.6	22.3	22.3	22.9	23.7	18.0	18.6	18.7	19.3	20.1	
	12H	22.0	22.8	22.7	23.3	24.1	18.0	18.6	18.8	19.3	20.0	
	4H	20.8	21.5	21.5	22.1	22.9	18.3	19.0	19.0	19.6	20.4	
	6H	21.5	22.1	22.2	22.8	23.6	18.5	19.1	19.3	19.8	20.6	
	8H	22.0	22.5	22.7	23.2	24.0	18.6	19.1	19.4	19.8	20.7	
12H	12H	22.5	23.3	23.3	23.7	24.5	18.7	19.1	19.4	19.8	20.6	
	4H	20.8	21.4	21.4	22.1	22.8	18.3	18.9	19.0	19.6	20.4	
	6H	21.6	22.0	22.3	22.8	23.6	18.7	19.1	19.4	19.8	20.7	
	8H	22.1	22.5	22.8	23.2	24.1	18.8	19.3	19.6	20.0	20.8	

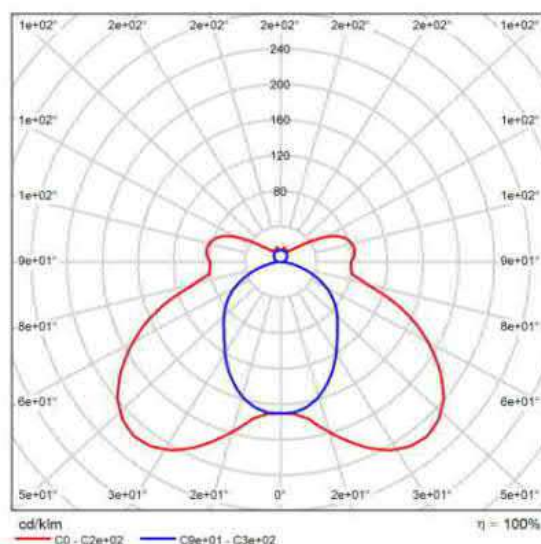
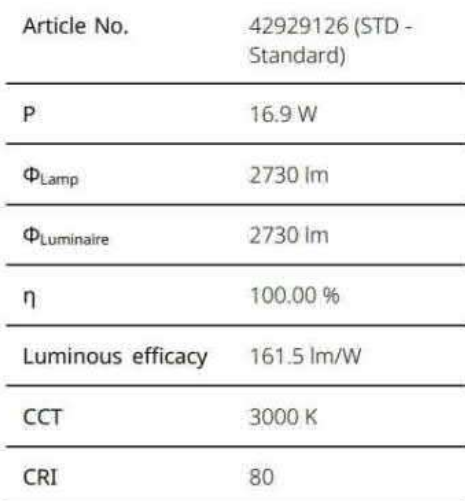
Variation of the observer position for the luminance distances S
 S = 1.0H +0.1 / -0.1 +0.1 / -0.2
 S = 1.5H +0.3 / -0.3 +0.6 / -0.6
 S = 2.0H +0.5 / -0.7 +1.2 / -1.4

Standard table	BK08	BK04
Correction Surtmann	S 5	1.2

Corrected glare indices referring to 2900lm Total luminous flux

UGR diagram (SHR: 0.25)

ZUMTOBEL AMP S BAS 2900-840 PC WB LDO



Polar LDC

Glare evaluation according to UGR													
		70	70	50	50	30	30	70	70	50	50	30	
Ceiling		50	30	80	30	30	30	50	30	50	30	30	
Walls		20	20	20	20	20	20	20	20	20	20	20	
Floor		20	20	20	20	20	20	20	20	20	20	20	
Room size X Y		Viewing direction at right angles to lamp axis						Viewing direction parallel to lamp axis					
2H	2H	17.2	18.9	18.2	19.5	20.1	20.1	14.8	16.0	15.3	16.6	17.2	
	3H	19.7	20.3	19.8	20.9	21.5	21.5	15.9	16.9	16.4	17.9	18.1	
	4H	19.7	20.8	20.3	21.4	22.0	22.0	16.1	17.2	16.7	17.8	18.4	
	6H	20.1	21.1	20.8	21.7	22.4	22.4	16.3	17.3	16.8	17.9	18.5	
	8H	20.4	21.3	21.0	21.9	22.6	22.6	16.3	17.3	16.8	17.9	18.6	
4H	2H	20.6	21.5	21.2	22.1	22.8	22.8	16.3	17.2	16.9	17.8	18.5	
	3H	16.2	16.5	16.8	19.6	20.5	20.5	16.1	17.2	16.7	17.8	18.4	
	4H	19.9	20.6	20.5	21.4	22.1	22.1	17.4	18.3	18.0	18.9	19.6	
	6H	21.0	21.8	21.7	22.4	23.2	23.2	18.0	18.7	18.7	19.4	20.2	
	8H	21.3	22.0	22.0	22.7	23.5	23.5	18.1	18.7	18.7	19.4	20.2	
8H	2H	21.7	22.3	22.4	23.0	23.8	23.8	18.1	18.7	18.8	19.4	20.2	
	3H	20.8	21.3	21.3	22.0	22.8	22.8	18.3	18.9	19.0	19.6	20.4	
	4H	21.3	21.9	22.0	22.6	23.4	23.4	18.7	19.2	19.4	19.9	20.7	
	6H	21.7	22.2	22.5	22.9	23.8	23.8	18.9	19.3	19.5	20.0	20.8	
	12H	22.2	22.7	23.0	23.4	24.3	24.3	18.8	19.2	19.6	20.0	20.8	
13H	2H	20.6	21.2	21.3	21.8	22.7	22.7	18.3	18.8	19.0	19.6	20.4	
	3H	21.3	21.8	22.1	22.6	23.4	23.4	18.8	19.3	19.5	20.0	20.8	
	4H	21.8	22.2	22.5	23.0	23.8	23.8	18.9	19.4	19.7	20.1	21.0	
	6H	21.8	22.2	22.5	23.0	23.8	23.8	18.9	19.4	19.7	20.1	21.0	
	8H	21.8	22.2	22.5	23.0	23.8	23.8	18.9	19.4	19.7	20.1	21.0	

Variation of the observer position for the luminance distances S

S = 1.0H

S = 1.5H

S = 2.0H

$\pm 0.1 / -0.1$

$\pm 0.3 / -0.3$

$\pm 0.4 / -0.6$

$\pm 0.1 / -0.1$

$\pm 0.5 / -0.5$

$\pm 1.0 / -1.2$

Standard table	BK08	BK05
Correction Surimant	S 4	1.8

Corrected glare indices referring to 2730lm Total luminous flux

UGR diagram (SHR: 0.25)

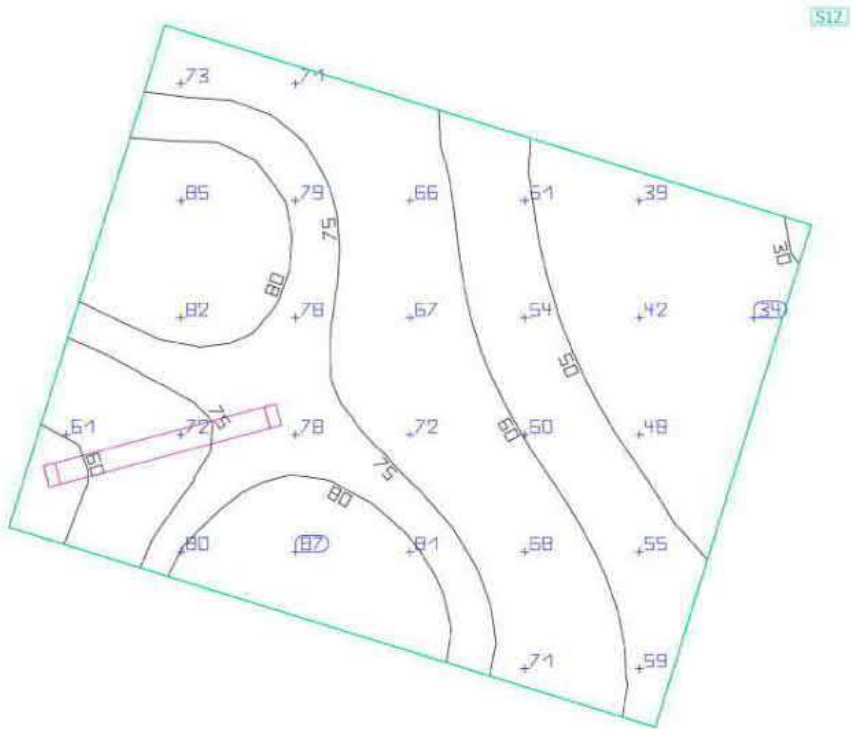
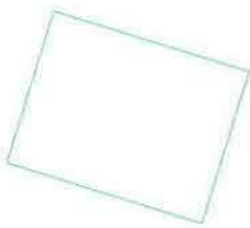
Site 1

Luminaire list

Φ_{total} 31560 lm	P_{total} 236.3 W	Luminous efficacy 133.6 lm/W
----------------------------	------------------------	---------------------------------

pcs.	Manufacturer	Article No.	Article name	P	Φ	Luminous efficacy
2	ZUMTOBEL	42929126 (STD - Standard)	AMP S BAS 2900-840 PC WB LDO	16.9 W	2730 lm	161.5 lm/W
9	ZUMTOBEL	42929141 (STD - Standard)	AMP S BAS 2900-840 CH WB EVG	22.5 W	2900 lm	128.9 lm/W

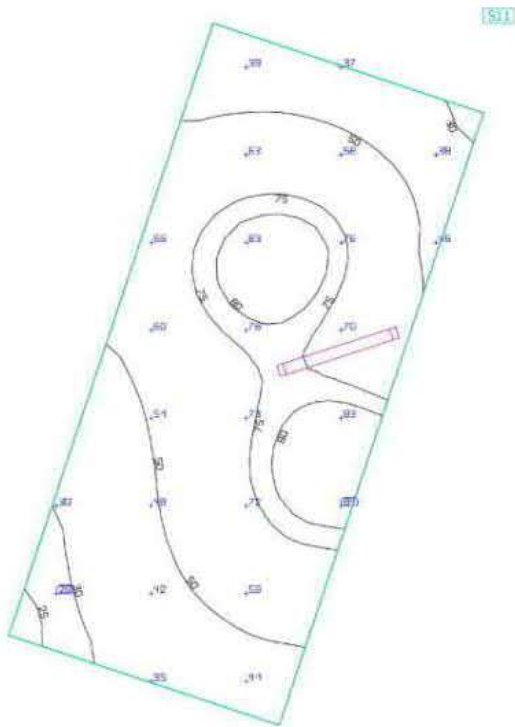
Apžiūros aikštelė 1
Workplane (Apžiūros aikštelė 1)



Properties	\bar{E} (Target)	E_{min}	E_{max}	g_1	g_2	Index
Workplane (Apžiūros aikštelė 1) Perpendicular illuminance (adaptive) Height: 4.300 m, Wall zone: 0.000 m	65.6 lx (≥ 50.0 lx) ✓	29.8 lx	89.5 lx	0.45	0.33	S12

Utilisation profile: DIALux presetting; Standard (outdoor transportation area)

Apžiūros aikštelė 2
Workplane (Apžiūros aikštelė 2)

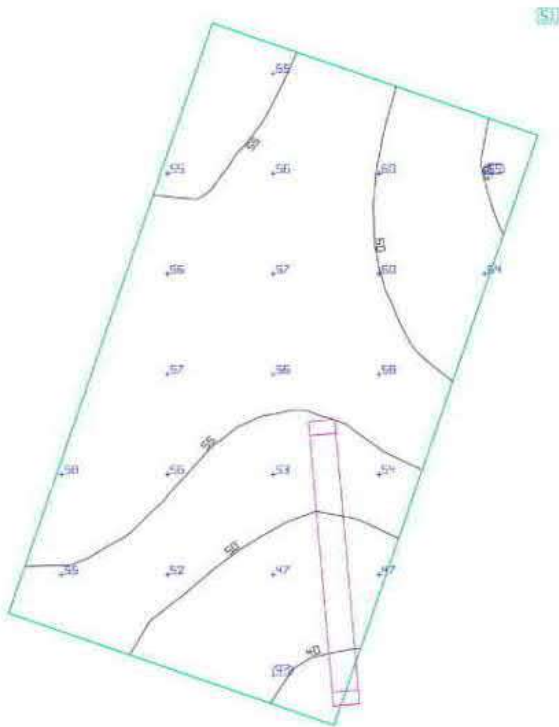


Properties	\bar{E} (Target)	E_{min}	E_{max}	g_1	g_2	Index
Workplane (Apžiūros aikštelė 2) Perpendicular illuminance (adaptive) Height: 3.500 m, Wall zone: 0.000 m	57.8 lx (≥ 50.0 lx) ✓	23.2 lx	87.9 lx	0.40	0.26	S11

Utilisation profile: DIALux presetting, Standard (outdoor transportation area)

Apžiūros aikštelė 3

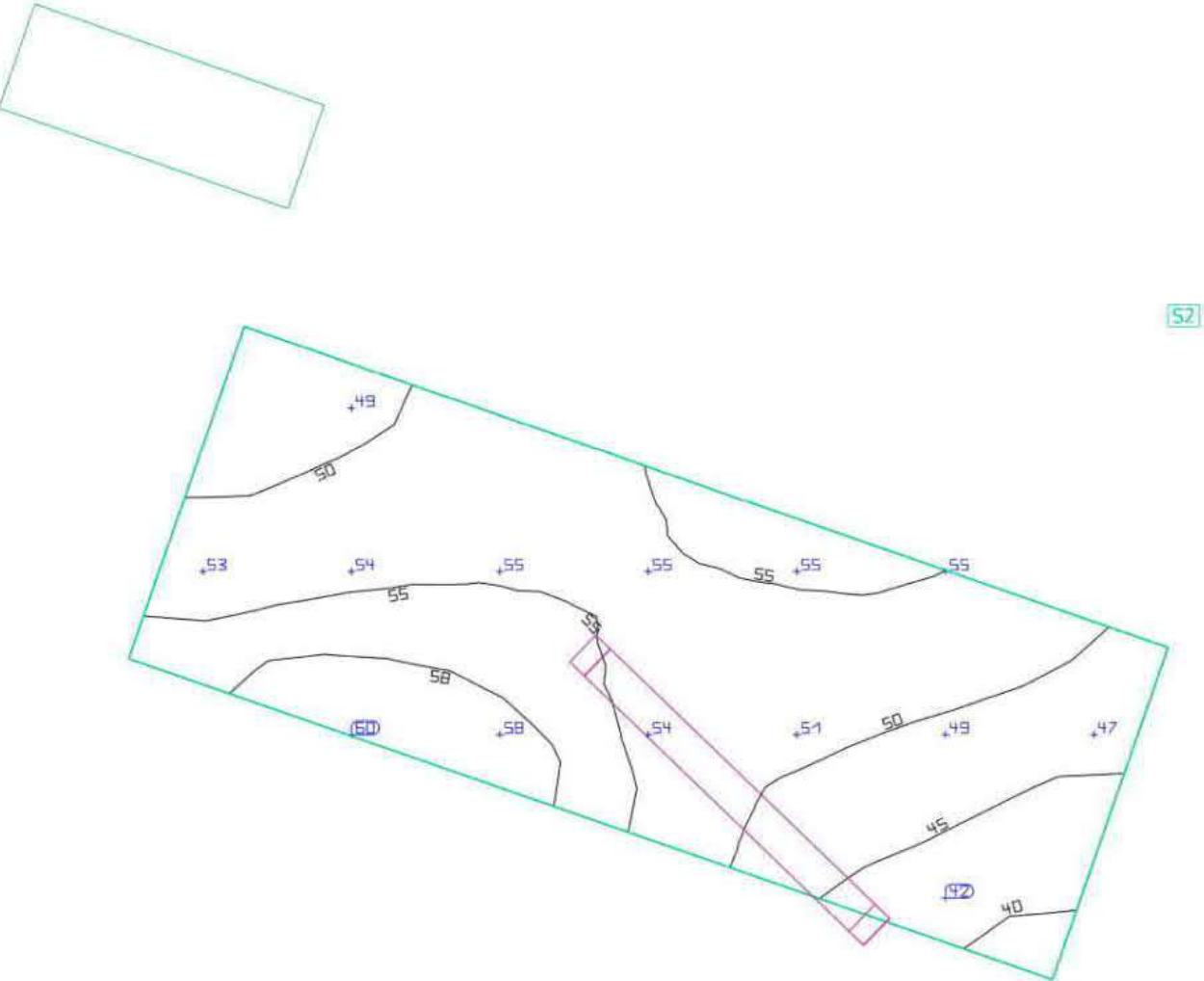
Workplane (Apžiūros aikštelė 3)



Properties	\bar{E} (Target)	E_{min}	E_{max}	g_1	g_2	Index
Workplane (Apžiūros aikštelė 3) Perpendicular illuminance (adaptive) Height: 6.300 m, Wall zone: 0.000 m	55.0 lx (≥ 50.0 lx) ✓	37.6 lx	66.1 lx	0.68	0.57	S1

Utilisation profile: DIALux presetting; Standard (outdoor transportation area)

Apžiūros aikštelė 4
Workplane (Apžiūros aikštelė 4)

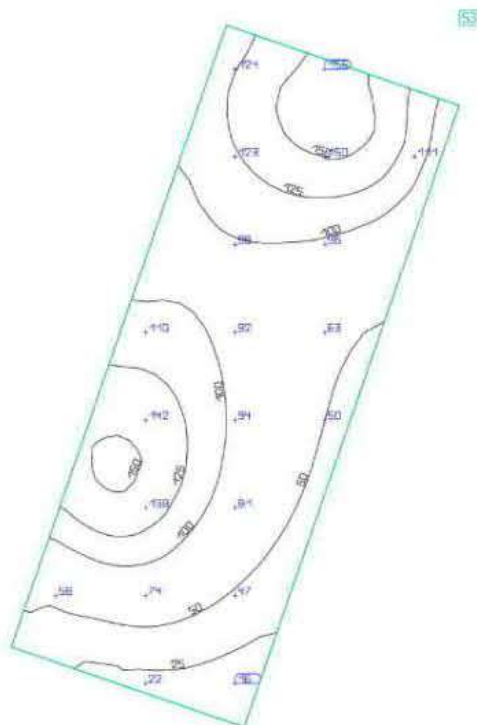


Properties	\bar{E} (Target)	E_{min}	E_{max}	g_1	g_2	Index
Workplane (Apžiūros aikštelė 4) Perpendicular illuminance (adaptive) Height: 6.300 m, Wall zone: 0.000 m	51.9 lx (≥ 50.0 lx) ✓	38.8 lx	59.5 lx	0.75	0.65	S2

Utilisation profile: DIALux presetting; Standard (outdoor transportation area)

Apžiūros aikštelė 5

Workplane (Apžiūros aikštelė 5)

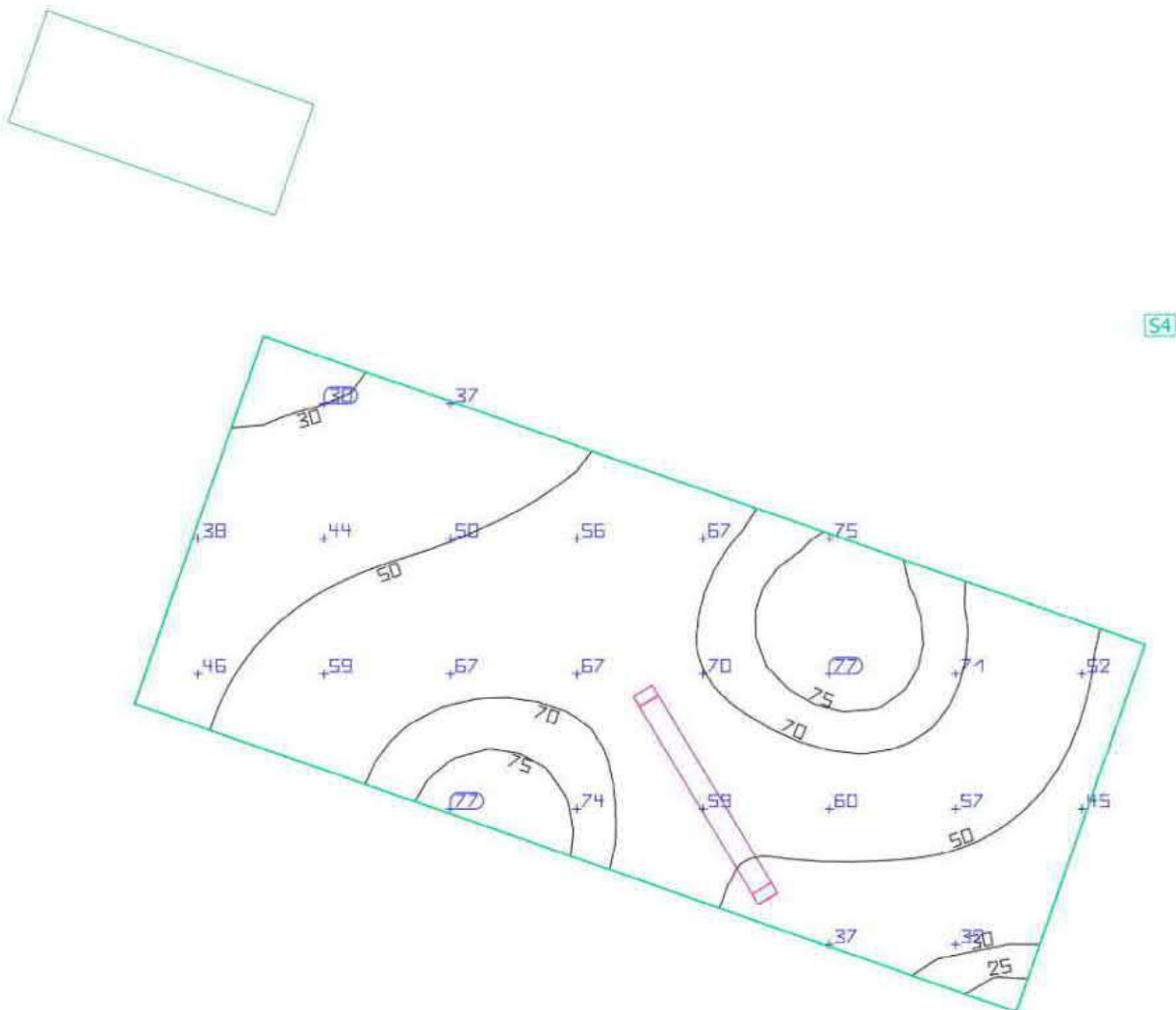


Properties	\bar{E} (Target)	E_{min}	E_{max}	g_1	g_2	Index
Workplane (Apžiūros aikštelė 5) Perpendicular illuminance (adaptive) Height: 7.500 m, Wall zone: 0.000 m	92.6 lx (≥ 50.0 lx) ✓	10.0 lx	164 lx	0.11	0.061	S3

Utilisation profile: DIALux presetting, Standard (outdoor transportation area)

Apžiūros aikštelė 6

Workplane (Apžiūros aikštelė 6)

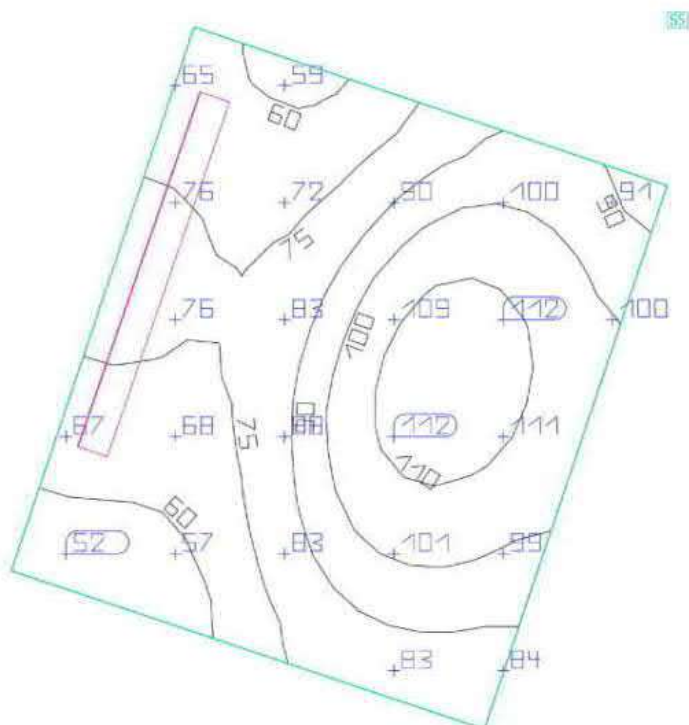
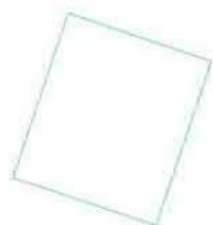


Properties	\bar{E} (Target)	E_{min}	E_{max}	g_1	g_2	Index
Workplane (Apžiūros aikštelė 6) Perpendicular illuminance (adaptive) Height: 2.200 m, Wall zone: 0.000 m	57.0 lx (≥ 50.0 lx) ✓	22.9 lx	78.6 lx	0.40	0.29	S4

Utilisation profile: DIALux presetting; Standard (outdoor transportation area)

Apžiūros aikštelė 7

Workplane (Apžiūros aikštelė 7)

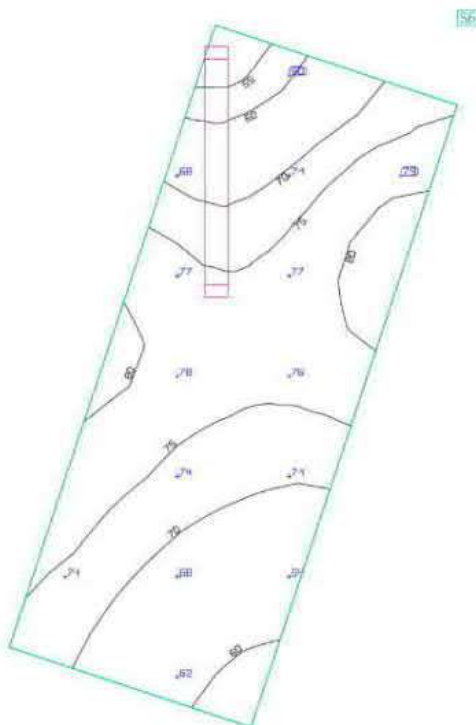


Properties	\bar{E} (Target)	E_{min}	E_{max}	g_1	g_2	Index
Workplane (Apžiūros aikštelė 7) Perpendicular illuminance (adaptive) Height: 2.500 m, Wall zone: 0.000 m	85.6 lx (≥ 50.0 lx) ✓	50.1 lx	115 lx	0.59	0.44	S5

Utilisation profile: DIALux presetting, Standard (outdoor transportation area)

Apžiūros aikštelė 8

Workplane (Apžiūros aikštelė 8)



Properties	\bar{E} (Target)	E_{min}	E_{max}	g_1	g_2	Index
Workplane (Apžiūros aikštelė 8) Perpendicular illuminance (adaptive) Height: 8.700 m, Wall zone: 0.000 m	71.8 lx (≥ 50.0 lx) ✓	50.6 lx	82.0 lx	0.70	0.62	S6

Utilisation profile: DIALux presetting, Standard (outdoor transportation area)

Workplane (Apžiūros aikštelė 9)

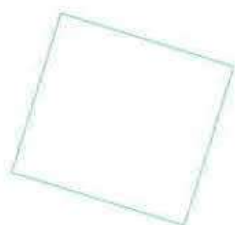


Properties	E (Target)	E _{min}	E _{max}	g ₁	g ₂	Index
Workplane (Apziūros aikštelė 9) Perpendicular illuminance (adaptive) Height: 6.200 m, Wall zone: 0.000 m	105 lx (≥ 50.0 lx) ✓	83,5 lx	116 lx	0.80	0.72	S7

balys.balciunas@sweco.lt

Apžiūros aikštelė 10

Workplane (Apžiūros aikštelė 10)

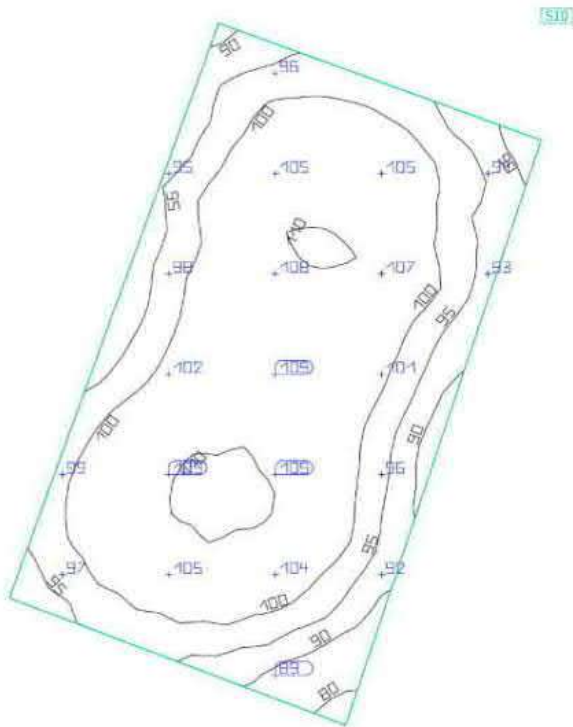


Properties	\bar{E} (Target)	E_{min}	E_{max}	g_1	g_2	Index
Workplane (Apžiūros aikštelė 10) Perpendicular illuminance (adaptive) Height: 8.700 m, Wall zone: 0.000 m	79.8 lx (≥ 50.0 lx) ✓	54.7 lx	92.6 lx	0.69	0.59	S8

Utilisation profile: DIALux presetting; Standard (outdoor transportation area)

Apžiūros aikštelė 11

Workplane (Apžiūros aikštelė 11)

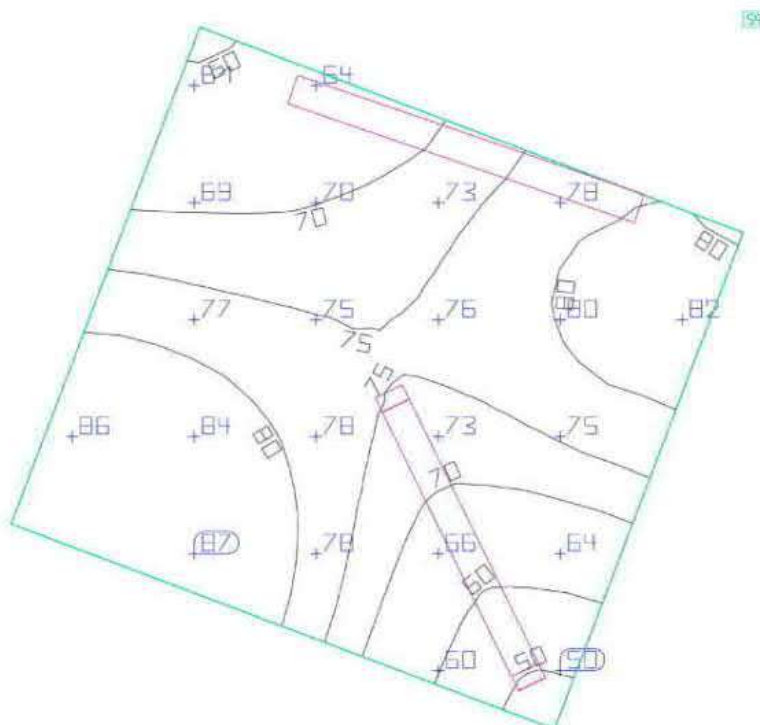
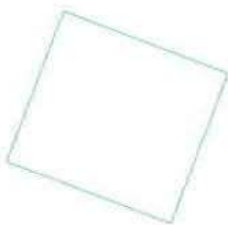


Properties	\bar{E} (Target)	E_{min}	E_{max}	g_1	g_2	Index
Workplane (Apžiūros aikštelė 11) Perpendicular illuminance (adaptive) Height: 6.200 m, Wall zone: 0.000 m	101 lx (≥ 50.0 lx) ✓	77.4 lx	111 lx	0.77	0.70	S10

Utilisation profile: DIALux presetting, Standard (outdoor transportation area)

Apžiūros aikštelė 12

Workplane (Apžiūros aikštelė 12)



Properties	\bar{E} (Target)	E_{min}	E_{max}	g_1	g_2	Index
Workplane (Apžiūros aikštelė 12) Perpendicular illuminance (adaptive) Height: 8.700 m, Wall zone: 0.000 m	74.4 lx (≥ 50.0 lx) ✓	46.3 lx	88.3 lx	0.62	0.52	S9

Utilisation profile: DIALux presetting; Standard (outdoor transportation area)

E PDV Balys Balčiūnas